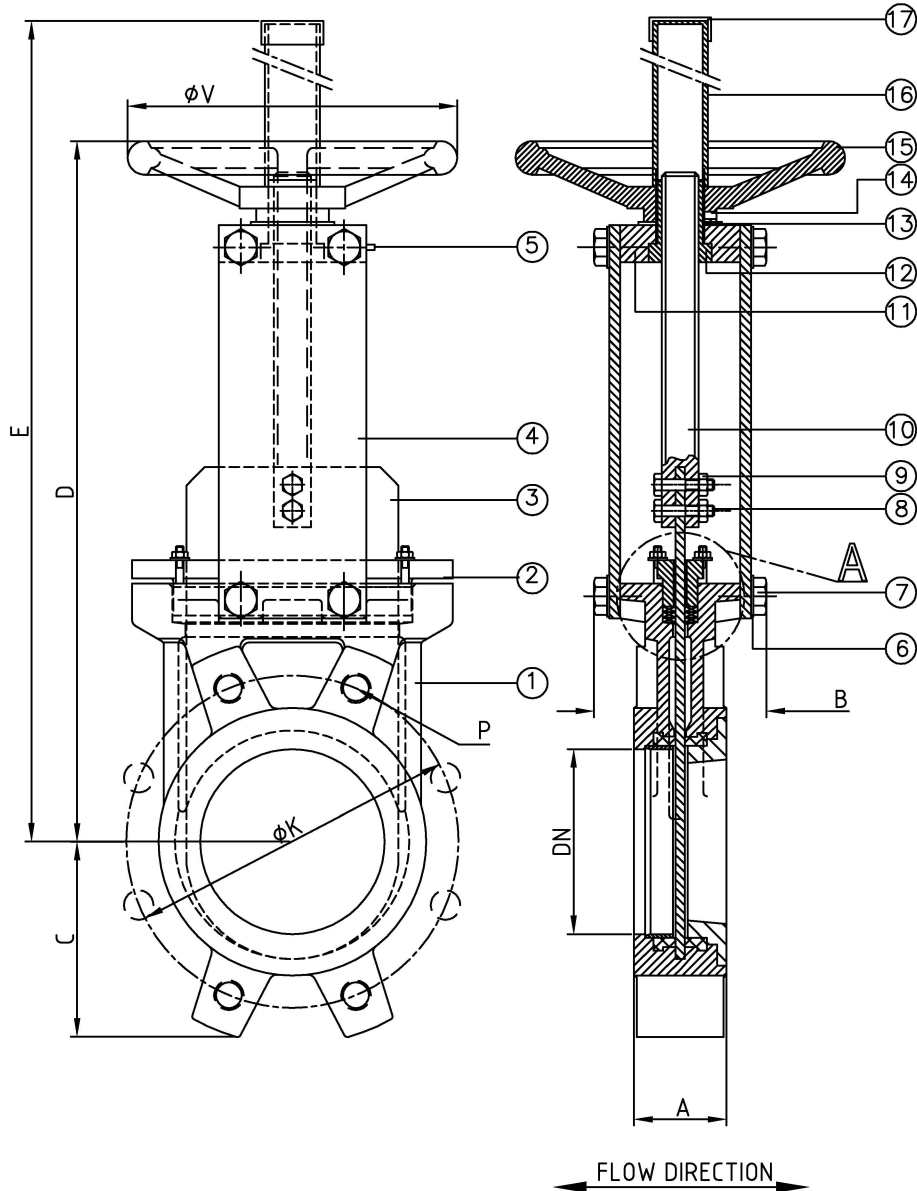


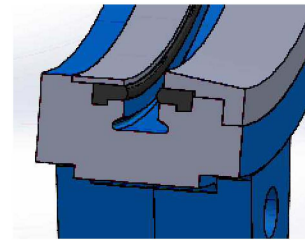
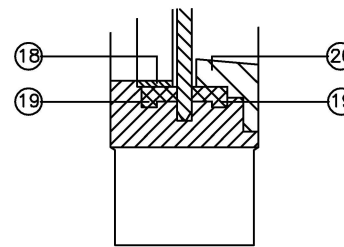
KNIFE GATE VALVE 200EV (MANUAL ACTUATOR)

DN	INCHES	A	B	C	D	E	ø V
50	2"	40	90	60	284	425	200
65	2 1/2"	40	90	68	308	450	200
80	3"	50	90	90	334	480	200
100	4"	50	90	105	374	520	200
125	5"	50	100	118	413	600	250
150	6"	60	100	135	465	650	250
200	8"	60	120	170	582	820	300
250	10"	70	120	202	682	1020	300
300	12"	70	120	240	782	1120	300
350	14"	96	192	255	898	1380	400
400	16"	100	192	295	1003	1490	400
450	18"	106	192	318	1093	1580	500
500	20"	110	192	345	1207	1690	500
600	24"	110	290	405	1410	2030	500

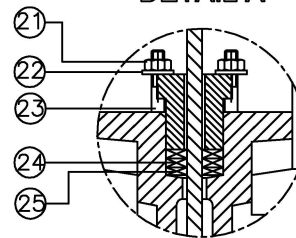
DN	INCHES	ø K		NO.HOLES	P	
		PN 10	ANSI 150		PN 10	ANSI 150
50	2"	125	120,6	4	M16	W 5/8"
65	2 1/2"	145	139,7	4	M16	W 5/8"
80	3"	160	152,4	8	M16	W 5/8"
100	4"	180	190,5	8	M16	W 5/8"
125	5"	210	215,9	8	M16	W 3/4"
150	6"	240	241,3	8	M20	W 3/4"
200	8"	295	298,4	8	M20	W 3/4"
250	10"	350	361,9	12	M20	W 7/8"
300	12"	400	431,8	12	M20	W 7/8"
350	14"	460	476,2	16	M20	W 1"
400	16"	515	539,7	16	M24	W 1"
450	18"	565	577,8	20	M24	W 1 1/8"
500	20"	620	635	20	M24	W 1 1/8"
600	24"	725	749,3	20	M27	W 1 1/4"



SEAT:



DETAIL A

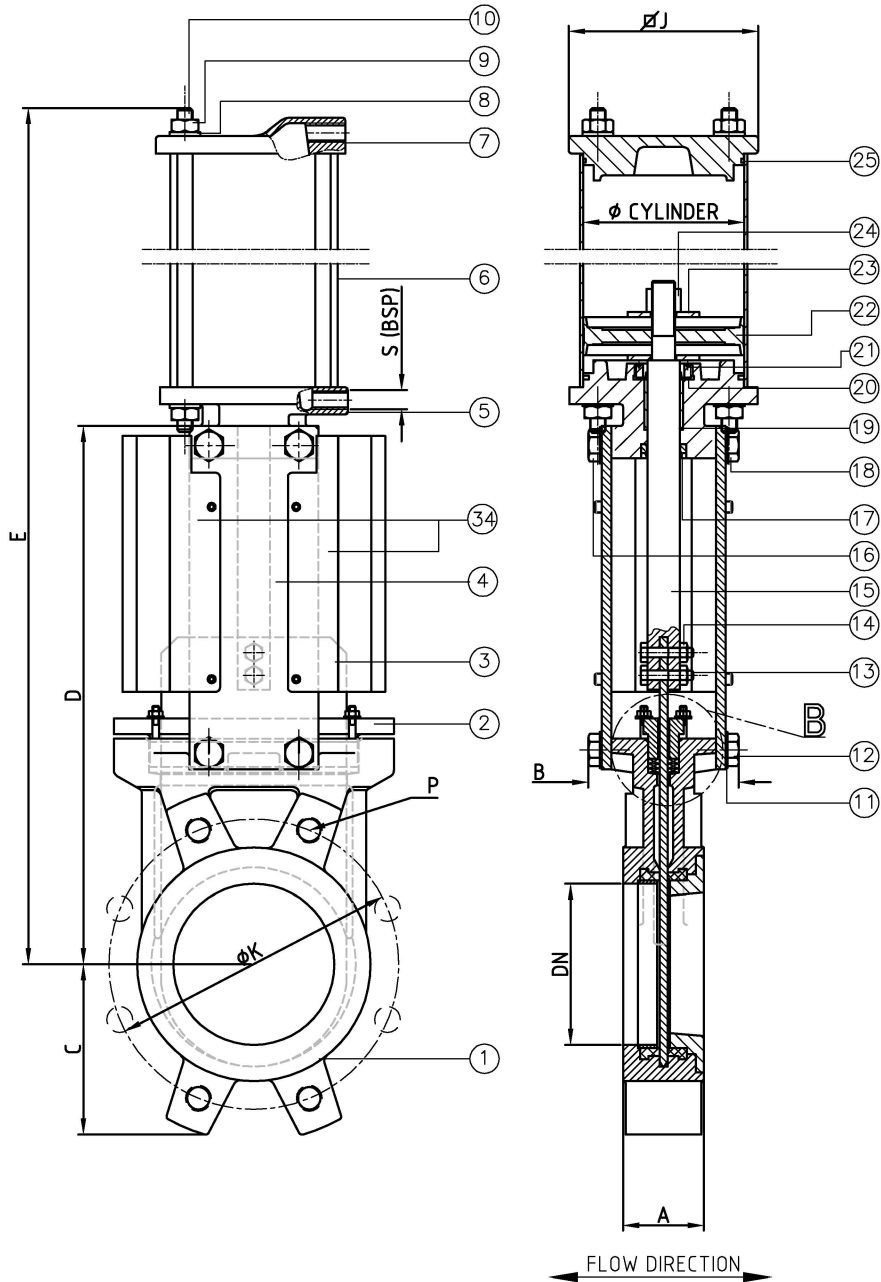


REF.	DENOMINATION	MATERIAL	MATERIAL
1	Body	Cast iron GG25	SS316
2	Packing gland	Aluminium/GGG50	SS316
3	Gate	SS304L	SS316L
4	Support plate	Steel	Steel
5	Greaser	Standard	Standard
6	Grower washer	Steel	A2
7	Bolts	Steel	A2
8	Union studs stem-gate	Steel	A2
9	Union nuts stem-gate	Steel	A2
10	Stem	SS303*	SS303*
11	Support bridge	Steel	Steel
12	Stem drive nut	Brass	Brass
13	Washer	Brass	Brass
14	Stop screw	A2	A2
15	Handwheel	Cast iron GG25	Cast iron GG25
16	Tube	Steel	Steel
17	Cover	Plastic	Plastic
18	Sealing ring	SS316L	SS316L
19	Seat	EPDM*	EPDM*
20	Reinforced ring 8°	SS316*	SS316*
21	Nut	Steel	A2
22	Washer	Steel	A2
23	Studs	Steel	A2
24	Packing o'ring	EPDM*	EPDM*
25	Packing	SYNT+PTFE*	SYNT+PTFE*

*CONSULT MATERIAL

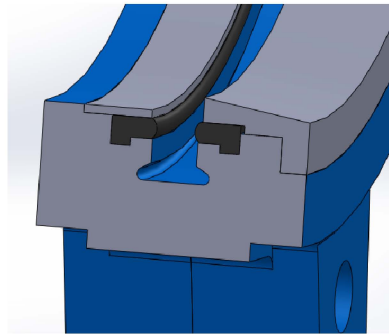
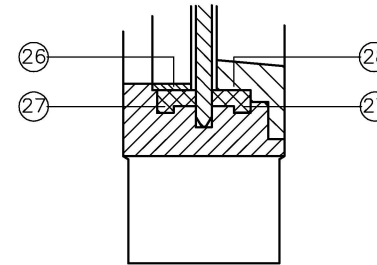
MAXIMUM WORKING PRESSURES RECOMMENDED:	STANDARD TEST PRESSURE:
DN50-DN400: 6Bar	DN50-DN400: 6Bar
DN50-DN250: 10Bar	DN450-DN600: 4Bar
DN300-DN400: 6Bar	
DN450-DN600: 4Bar	

KNIFE GATE VALVE 200EA D/A(PNEUMATIC ACTUATOR)

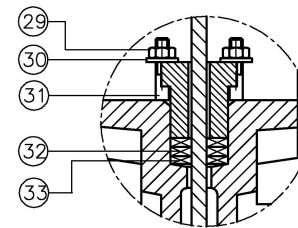


DN	INCHES	A	B	C	D	E	ø CYLINDER	ø J	S (B.S.P)	DN	INCHES	ø K	No.HOLES	P	
												PN 10	ANSI 150	PN 10	ANSI 150
50	2"	40	90	60	240	410	80	102,5	1/4"	50	2"	125	120,6	4	M16 W 5/8"
65	2 1/2"	40	90	68	270	456	80	102,5	1/4"	65	2 1/2"	145	139,7	4	M16 W 5/8"
80	3"	50	90	90	295	500	80	102,5	1/4"	80	3"	160	152,4	8	M16 W 5/8"
100	4"	50	90	105	335	560	100	122	1/4"	100	4"	180	190,5	8	M16 W 5/8"
125	5"	50	100	118	370	640	125	147	1/4"	125	5"	210	215,9	8	M16 W 3/4"
150	6"	60	100	135	418	716	125	147	1/4"	150	6"	240	241,3	8	M20 W 3/4"
200	8"	60	120	170	522	880	160	182	1/4"	200	8"	295	298,4	8	M20 W 3/4"
250	10"	70	120	202	625	1042	200	229	1/4"	250	10"	350	361,9	12	M20 W 7/8"
300	12"	70	120	240	725	1182	200	229	1/4"	300	12"	400	431,8	12	M20 W 7/8"
350	14"	96	192	255	845	1360	250	281	3/8"	350	14"	460	476,2	16	M20 W 1"
400	16"	100	192	295	945	1540	250	281	3/8"	400	16"	515	539,7	16	M24 W 1"
450	18"	106	192	318	1045	1675	300	343	3/8"	450	18"	565	577,8	20	M24 W 1 1/8"
500	20"	110	192	345	1148	1840	300	343	3/8"	500	20"	620	635	20	M24 W 1 1/8"
600	24"	110	290	405	1360	2145	300	343	3/8"	600	24"	725	749,3	20	M27 W 1 1/4"

SEAT:



DETAIL B



REF.	DENOMINATION	MATERIAL	MATERIAL
1	Body	Cast iron GG25	SS316
2	Packing gland	Aluminium/GGG50	SS316
3	Gate	SS304L	SS316L
4	Support plate	Steel	Steel
5	Lower cup	Aluminium	Aluminium
6	Pneumatic tube	Aluminium	Aluminium
7	Upper cup	Aluminium	Aluminium
8	Washer	Steel	A2
9	Nut	Steel	A2
10	Tie rod	Steel	A2
11	Grower washer	Steel	A2
12	Bolts	Steel	A2
13	Union studs stem-gate	Steel	A2
14	Union nuts stem-gate	Steel	A2
15	Stem	SS303	SS303
16	Nut	Steel	Steel
17	Scraper	NBR	NBR
18	Actuator fixing nut	Steel	Steel
19	Gasket	Bronze	Bronze
20	Sealing ring	NBR	NBR
21	Sealing gland	SS316	SS316
22	Piston rod	NBR	NBR
23	Washer	Steel	A2
24	Nut	Steel	A2
25	Sealing o'ring	EPDM	EPDM
26	Sealing Ring	SS316	SS316
27	Seat	EPDM*	EPDM*
28	Reinforced ring 8"	SS316*	SS316*
29	Nut	Steel	A2
30	Washer	Steel	A2
31	Studs	Steel	A2
32	Packing o'ring	EPDM*	EPDM*
33	Packing	SYNT+PTFE*	SYNT+PTFE*
34	Covers (Optional)	SS304L	SS304L

*CONSULT MATERIAL	
MAXIMUM WORKING PRESSURE'S RECOMMENDED:	STANDARD TEST PRESSURE:
DN50-DN250: 10Bar	DN50-DN400: 6Bar
DN300-DN400: 6Bar	DN450-DN600: 4Bar
DN450-DN600: 4Bar	